

2023-2024

UMass Memorial Medical Center

Pharmacy Residency Program

PGY2 Critical Care



@UMassRxRes

Hospital and Department Overview

UMass Memorial Medical Center (UMMMC) is an 800+ bed academic medical center and is part of UMass Memorial Health, the largest health care system in Central Massachusetts. We are the clinical partner of UMass Chan Medical School, with access to the latest technology, research, and clinical trials. The Medical Center consists of three campuses in Worcester, MA: University, Memorial, and Hahnemann Campus.

Since starting the pharmacy residency program in 1995, we have made a significant impact on patient care by becoming an integral part of the medical teams through working directly on the hospital floors and guideline/policy development. We strive for excellence in the training of pharmacy residents, providing a positive and rewarding learning experience. Our programs are committed to training that respects the diversity of our residents and our patient population with an emphasis on professional development and wellness.

General Information

The PGY2 Critical Care Pharmacy Residency Program is designed to prepare pharmacists for a career in a critical care practice setting. Graduates of our program are prepared for advanced patient care, academic, or other specialized positions, along with board certification. UMMMC has 7 adult ICUs, a pediatric ICU, and a neonatal ICU providing a diverse range of critical care learning experiences. We are the only level-1 trauma center for Central Massachusetts and have a state-of-the-art Emergency Medicine and Toxicology Department. Teaching opportunities are available through our strong relationships with regional colleges of pharmacy as well as through the University of Massachusetts Chan Medical School and Tan Chingfen Graduate School of Nursing.

Program Fundamentals

- Accreditation
 - ASHP-accredited
- Duration
 - 12 months, starting July 1st
- Positions available
 - 1
- Estimated stipend
 - \$55,620

Program Leadership



Michael Ha, PharmD, BCCCP
Director, PGY2 Critical Care Residency Program
Clinical Pharmacy Specialist - Surgical ICU
55 Lake Ave N
Department of Pharmacy
Worcester, MA 01655
Email: Michael.Ha@umassmemorial.org

Krystina Ahern, PharmD, BCPS, BCCCP
Coordinator, PGY2 Critical Care Residency Program
Clinical Pharmacy Specialist - Medical ICU
55 Lake Ave N
Department of Pharmacy
Worcester, MA 01655
Email: Krystina.Ahern@umassmemorial.org



Prerequisites and Licensure

- Candidates must be PharmD graduates of an accredited college of pharmacy
- Completion of an ASHP-accredited PGY1 pharmacy residency
- Be eligible for Massachusetts licensure, with successful completion of NAPLEX and MPJE by September 30th

Application Information

To apply, the following items must be submitted through PhORCAS to be considered for an on-site or virtual interview by January 1st:

- Letter of intent
- Curriculum vitae
- Three references
- Official college transcripts

Program Structure

UMMMC pharmacy residency programs are structured to provide exposure to a variety of practice settings with the goal of developing well-rounded clinical pharmacists. Over the course of one-year, residents will complete required, elective, and longitudinal learning experiences to develop skills in medication management, participating in medical emergencies, leadership, research, precepting, and interprofessional communication and collaboration while simultaneously being exposed to various disease states. Required PGY2 program rotations will focus on the respective specialty area, while electives may focus on other areas of pharmacy practice.

Each resident will complete a two-week orientation at the start of the residency year. The training completed in this introductory course will prepare residents to perform tasks necessary to function in the role of a pharmacist at UMMC. Residents will also be oriented to the pharmacokinetic and emergency response services. PGY2 Critical Care residents will also participate in a core topic review with preceptors for common critical care disease states.

The standard length of time for a learning experience in the UMMC PGY2 Critical Care residency program is 5 weeks. A one-week project block will be built into the schedule around the midpoint of the year. All required, elective, and longitudinal learning experiences are listed below.

Required Learning Experiences	Elective Learning Experiences	Longitudinal Experiences
<ul style="list-style-type: none"> • Orientation • Medical ICU • Surgical ICU • Neurosurgical ICU • Cardiac ICU • Emergency Medicine • Administration • MICU II or SICU II (resident preference) 	<ul style="list-style-type: none"> • Infectious Disease/ Antimicrobial Stewardship • Pediatric ICU • Neonatal ICU • Trauma • Nutrition Support • Toxicology • Academia • Repeat of required elective 	<ul style="list-style-type: none"> • Clinical staffing <ul style="list-style-type: none"> ○ Weekend: decentralized, every 3rd or 4th weekend ○ Weekday: centralized, 3 hours weekly • Inpatient Code Blue and Code Stroke response • Presentations <ul style="list-style-type: none"> ○ 3 Pharmacy Conferences ○ 2 Critical Care Conferences ○ 1 Northeastern Critical Care Pharmacotherapy Symposium clinical pearl ○ 1 Continuing Education presentation • Research projects (flipped model) • Formulary project (medication use evaluation or drug class review) • Teaching opportunities: <ul style="list-style-type: none"> ○ Teaching certificate ○ Precepting opportunities (APPE students and PGY1 residents) ○ Didactic lectures to advanced practitioner students • Certification opportunities such as ACLS, PALS, and ENLS

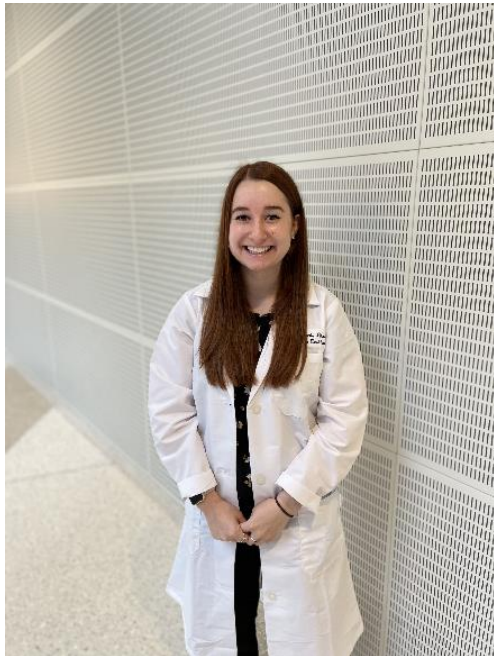
Requirements for Successful Completion of the PGY2 Critical Care Residency Program

- Massachusetts Pharmacy Licensure by September 30th
- Completion of all required learning experiences
- Greater than or equal to 80 % of goals and objectives for the respective program are completed by the end of the residency year. No objective can be listed as “needs improvement”.
- No objectives listed as “Needs Improvement”
- Massachusetts Pharmacy Licensure by September 30th
- Completion of teaching certificate (if not completed during PGY1 residency)
- Minimum average of 200 interventions/month for clinical rotations, documented in Epic
- 3 Pharmacy Conference presentations
- 1 Pharmacy Continuing Education presentation
- 2 Critical Care Case Conference presentations
- 1 Clinical Pearl presentation at the New England Critical Care Pharmacotherapy Symposium
- Completion of Residency Research Project Number One
 - Revise study protocol based on IRB feedback for final approval
 - Complete data collection
 - Complete data analysis
 - Complete draft of manuscript worthy of publication
 - Submit abstract to and present at ASHP Midyear Clinical Meeting
- Start Residency Research Project Number Two
 - Submit study proposal
 - Complete initial literature review
 - Submit study protocol to IRB for initial review and approval
 - Design data collection tool
 - Create thorough project handoff
- Complete MUE or drug class review with formal write up and presentation of results
- Complete all required topic discussions, maintain topic discussion checklist and submit by end of year
- Residency binder completed, and all documents uploaded to PharmAcademic
- All PharmAcademic and presentation evaluations have been completed and uploaded into PharmAcademic

Current Preceptors

Learning Experience	Preceptor(s)
Academia	Abir Kanaan, PharmD
Administration	Allison Forni, PharmD, BCPS, BCCCP Elizabeth Radigan, PharmD, BCPS
Cardiac ICU	Nicholas Servati, PharmD, BCCP
Emergency Medicine	Michael DiNapoli, PharmD, BCCCP Peter Golenia, PharmD, BCPS Irene Li, PharmD, BCPS
Infectious Diseases	Jessica Lomanno, PharmD, BCIDP
Medical ICU	Krystina Ahern, PharmD, BCPS, BCCCP Elizabeth Kowalik, PharmD, BCCCP Mackenzie Piche, PharmD, BCPS, BCCCP (Memorial Campus)
Neonatal ICU	Mehran Nesari Asdigha, PharmD
Neurosurgical ICU	Nadine Jaber, PharmD, BCPS
Nutrition Support	Katherine Saunders, MS, RD, LDN, CNSC
Pediatric ICU	Ann Considine, PharmD
Surgical ICU	Ifeoma Asoh, PharmD (Memorial Campus) Michael Ha, PharmD, BCCCP
Trauma	Lisa McNamara MS, RN, ACNP

Current UMMMC PGY2 Critical Care Residents



Brittany Block, PharmD
PGY1: UMass Memorial Medical Center
Chief Resident
Email: Brittany.Block@umassmemorial.org



Tessa Brighton, PharmD
PGY1: UMass Memorial Medical Center
Email: Tessa.Brighton@umassmemorial.org

Previous UMMMC PGY2 Critical Care Residents

Our program has developed residency graduates who have obtained positions as faculty members at colleges of pharmacy, clinical specialists at large academic medical centers, as well as leadership and administrator positions at health care institutions nationwide.

Name	Position Out of Residency
2021-2022	
Avilash Bagchi, PharmD	Advanced Clinical Pharmacist - Critical Care <i>Ocala Regional Medical Center</i>
Lindsey Kip, PharmD, BCPS	Thoracic Surgery Pharmacist <i>University of Kentucky Healthcare</i>
2020-2021	
Priya Vallabh, PharmD, BCPS, BCCCP	Clinical Pharmacist - Critical Care <i>UMass Memorial Medical Center</i>
Mariela Cardona Gonzalez, PharmD, BCCCP	Critical Care Pharmacy Specialist - Surgical and Burn Critical Care <i>JH Bayview Medical Center</i>
2019-2020	
Mackenzie Piche, PharmD, BCPS, BCCCP	Clinical Pharmacist - Medical ICU <i>UMass Memorial Medical Center</i>
2018-2019	
Emily Dionne, PharmD, BCPS	Clinical Pharmacist - Formulary Management <i>UMass Memorial Medical Center</i>
Rachel Bigos, PharmD, BCPS, BCCCP	Clinical Pharmacist - Critical Care <i>Christiana Care Health System</i>
2017-2018	
Irene Li, PharmD, BCPS	Clinical Pharmacy Specialist - Emergency Medicine <i>UMass Memorial Medical Center</i>
Ashley West, PharmD, BCPS, BCCCP	Clinical Pharmacist - Medical ICU <i>Yale New Haven Hospital</i>
...and many more!	



SAY HELLO TO WORCESTER

Welcome to the state's most vibrant and livable mid-sized city! Worcester is the second largest and fastest-growing major city in New England and features a large variety of beautiful scenery, historical sites, and fun indoor and outdoor activities for everyone!

Beyond our mentor program and benefits package, including conference reimbursement and the Employee Assistance Program, we aim to build a well-rounded residency program focusing on developing each resident professionally and personally.



Resident Bonding Events

- Making the most of what Worcester and Central MA has to offer!
- Several 'Thank-A-Resident' Days each year, dedicated to resident bonding and wellness with clinical services covered by preceptors

Mentor-Mentee Meet & Greet socials!



Hiking, skiing, & more!



Renowned breweries & restaurants galore!



TREE HOUSE BREWING CO.

