

2023-2024



# UMass Memorial Medical Center

## PGY1 Pharmacy Residency Program



@UMassRxRes

### **Hospital and Department Overview**

UMass Memorial Medical Center (UMMMC) is an 800+ bed academic medical center and is part of UMass Memorial Health, the largest health care system in Central Massachusetts. We are the clinical partner of UMass Chan Medical School, with access to the latest technology, research, and clinical trials. The Medical Center consists of three campuses in Worcester, MA: University, Memorial, and Hahnemann Campus.

Since starting the pharmacy residency program in 1995, we have made a significant impact on patient care by becoming an integral part of the medical teams through working directly on the hospital floors and guideline/policy development. We strive for excellence in the training of pharmacy residents, providing a positive and rewarding learning experience. Our programs are committed to training that respects the diversity of our residents and our patient population with an emphasis on professional development and wellness.

### **General Information**

The PGY1 Pharmacy Residency Program is a yearlong, accredited program designed to build on Doctor of Pharmacy (PharmD) education and contribute to the development of clinical pharmacists responsible for medication-related care of patients with a wide range of conditions, eligible for board certification, and eligible for postgraduate year two (PGY2) pharmacy residency training. Over the course of the year, residents will have the opportunity to provide high-level pharmaceutical care in a variety of patient care settings and gain experience in the management of acutely ill patients. Residents will also lead a research project, strengthen their communication skills through formal and informal presentations in a variety of settings, participate in various interdisciplinary hospital committees, and complete a teaching certificate program. Teaching opportunities are provided through regional colleges of pharmacy as well as our affiliated medical school. Residents are supported throughout the year through a formal mentor program.

## Program Fundamentals

- Accreditation
  - ASHP-accredited
- Duration
  - 12 months, starting July 1<sup>st</sup>
- Positions Available
  - 4
- Estimated Stipend
  - \$52,983

## Program Leadership



Kathleen Belusko, PharmD, BCPS  
Director, PGY1 Pharmacy Residency Program  
Clinical Pharmacy Specialist - Adult Internal Medicine  
55 Lake Ave N  
Department of Pharmacy  
Worcester, MA 01655  
Email: [kathleen.belusko@umassmemorial.org](mailto:kathleen.belusko@umassmemorial.org)

Emily Dionne, PharmD, BCPS  
Coordinator, PGY1 Pharmacy Residency Program  
Clinical Pharmacy Specialist - Formulary Management  
55 Lake Ave N  
Department of Pharmacy  
Worcester, MA 01655  
Email: [emily.dionne@umassmemorial.org](mailto:emily.dionne@umassmemorial.org)  
Twitter: @edionneRX



## Prerequisites and Licensure

- Candidates must be PharmD graduates of an accredited college of pharmacy
- Be eligible for Massachusetts licensure, with successful completion of NAPLEX and MPJE by September 30<sup>th</sup>

## Application Information

To apply, the following items must be submitted through PhORCAS to be considered for an on-site or virtual interview by January 1<sup>st</sup>:

- Letter of intent
- Curriculum vitae
- Three references (at least 1 reference from a clinical preceptor preferred)
- Official college transcript

## Program Structure

The PGY1 Pharmacy Residency Program is an ASHP-accredited program that is tailored to appeal to an individual desiring a well-rounded pharmacy experience. The residents will have the opportunity to provide pharmaceutical care in a variety of patient care settings including practice management, internal medicine, medical and surgical ICU, cardiology, pediatrics, infectious disease, emergency medicine, and medication management. The majority of rotations will take place at the University Campus, but some rotations can be taken at the Memorial Campus.

| Required Learning Experiences*  | Elective Learning Experiences§   | Longitudinal Experiences   |
|---|--|--|
| <ul style="list-style-type: none"> <li>• Orientation (2 weeks)</li> <li>• Practice Management (Operations and Order Verification Training)</li> <li>• Internal Medicine</li> <li>• Medical ICU</li> <li>• Choice of 1: Surgical ICU, Neuro ICU, or Internal Medicine 2</li> <li>• Infectious Diseases</li> <li>• Cardiology: Internal Medicine - Cardiology, Cardiac ICU, or Heart Failure</li> <li>• Pediatric ICU</li> <li>• Medication Management</li> </ul> | <ul style="list-style-type: none"> <li>• Academia</li> <li>• Administration</li> <li>• Anticoagulation</li> <li>• Cardiac ICU **</li> <li>• Heart Failure**</li> <li>• Emergency Medicine***</li> <li>• Internal Medicine - Neurology</li> <li>• Neonatal ICU</li> <li>• Neuro ICU**</li> <li>• Pediatric General Medicine</li> <li>• Transitions of Care</li> </ul> | <ul style="list-style-type: none"> <li>• Weekend staffing               <ul style="list-style-type: none"> <li>○ Centralized, two shifts every 4 weeks</li> </ul> </li> <li>• Weekday staffing               <ul style="list-style-type: none"> <li>○ Centralized, 4 hours weekly</li> </ul> </li> <li>• Pharmacy Conference presentations</li> <li>• Pharmacy Forum (student NAPLEX review) presentations</li> <li>• Precepting opportunities</li> <li>• Research project (Present at Vizient Pharmacy Network Meeting at ASHP Midyear and Eastern States)</li> <li>• Formulary project (medication use evaluation or drug class review)</li> <li>• Hospital Committees</li> <li>• New England Postgraduate Pharmacy Teaching and Learning Seminar</li> </ul> |
| <p>*All rotations are 5 weeks in length, with Practice Management being the first rotation for all PGY-1 residents<br/> <b>** Can be taken if not taken as a core rotation</b><br/> <b>*** Prerequisites: Internal Medicine/ICU and Infectious Diseases</b><br/>           §Choice of 2</p>   |  |  |

## Current Preceptors

| Learning Experience                | Preceptor(s)   |
|------------------------------------|--|
| Academia                           | Abir Kanaan, PharmD  |
| Administration                     | Allison Forni, PharmD, BCPS, BCCCP<br>Liz Radigan, PharmD, BCPS  |
| Anticoagulation Service Management | Pia Clive, PharmD, BCPS, BCCP (Memorial Campus)<br>Kathleen Sargent, PharmD, BCPS  |
| Cardiac ICU                        | Nick Servati, PharmD, BCCP   |
| Cardiology - General               | Kyle Fraielli, PharmD, BCCP  |
| Cardiology - Heart Failure         | Celia Schumacher, PharmD, BCPS, BCCP   |
| Emergency Medicine                 | Michael DiNapoli, PharmD, BCPS, BCCCP<br>Peter Golenia, PharmD, BCPS<br>Irene Li, PharmD, BCPS   |
| Infectious Disease                 | Jessica Lomanno, PharmD, BCIDP   |
| Internal Medicine                  | Katie Belusko, PharmD, BCPS<br>Pia Clive, PharmD, BCPS, BCCP (Memorial Campus)<br>Jennifer Do, PharmD, BCPS (Memorial Campus)<br>Marisa O'Brien, PharmD, BCPS                  |
| Medication Management              | Emily Dionne, PharmD, BCPS<br>Allison Forni, PharmD, BCPS, BCCCP<br>Liz Isaac, PharmD, BCPS<br>Ali Laughlin, PharmD<br>Megan Leary, PharmD, MSHIM<br>Liz Radigan, PharmD, BCPS |
| Medical ICU                        | Krystina Ahern, PharmD, BCPS, BCCCP<br>Liz Kowalik, PharmD, BCPS, BCCCP<br>Mackenzie Piché, PharmD, BCPS, BCCCP (Memorial Campus)  |
| Neonatal ICU                       | Mehran Nesari Asdigha, PharmD (Memorial Campus)  |
| Neuro/Trauma ICU                   | Nadine Jaber, PharmD, BCPS, BCCCP  |
| Pediatrics                         | Ann Considine, PharmD  |
| Surgical ICU                       | Michael Ha, PharmD, BCPS, BCCCP<br>Ifeoma Asoh, PharmD (Memorial Campus)   |
| Transitions of Care                | Timothy McMath, PharmD, BCACP  |

## Requirements for Successful Completion of the PGY1 Residency Program

- Massachusetts Pharmacy Licensure by September 30<sup>th</sup>
- Completion of all required learning experiences
- Completion of teaching seminar course
- Achievement of greater than or equal to 80 % of goals and objectives for the respective program completed by the end of the residency year with a final rating of satisfactory progress in all other ASHP objectives.
- By completion of residency program, no objective can be listed as "needs improvement"
- Completion of 3-4 pharmacy conferences, including 1 presented as a journal club
- Completion of 1 continuing education (CE) accredited presentation
- Completion of 3-4 pharmacy forum presentations
- Completion of 1 formulary management project (e.g., drug class review) with formal write-up and presentation of results
- Monthly documentation of i-Vents within Epic (min 200/monthly)
- Monthly documentation of duty hours
- Completion of longitudinal research project
  - Submit study protocol to IRB for approval
  - Present poster at Vizient Pharmacy Network Meeting in December (during ASHP Midyear Clinical Meeting)
  - Complete data collection/analysis
  - Platform presentation of results at Eastern States Regional Residency Conference (April/May)
  - Presentation to pharmacy department at Resident Research Symposium (June)
  - Completion of manuscript worthy of publication
- Completion of all evaluations in PharmAcademic
- Residency Binder completed and all documents uploaded to PharmAcademic
- Final evaluation by PGY1 Pharmacy Residency Program Director



**Current UMMC PGY1 Residents**



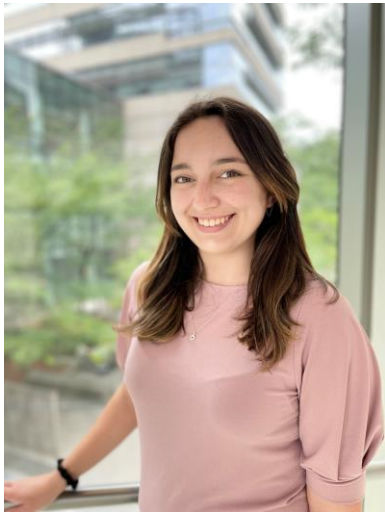
Mary Bliss, PharmD  
Pharmacy School: Rutgers University



Priya Kavalam, PharmD  
Pharmacy School: University of Maryland



Jessica Lopes, PharmD  
Pharmacy School: Albany College of  
Pharmacy



Jacqueline Plant, PharmD  
Pharmacy School University of Rhode  
Island



Sarah Samel, PharmD  
Pharmacy School: Northeastern University



Nick Tran, PharmD  
Pharmacy School: University of Southern  
California

### Previous UMMMC PGY1 Residents

Since 1995, our PGY1 program has developed residency graduates who have obtained positions as faculty members at colleges of pharmacy, clinical specialists at large academic medical centers, as well as leadership and administrator positions at health care institutions nationwide.

| Name                        | Position After PGY-1   |
|-----------------------------|--|
| <b>2021-2022</b>            |  |
| Cassandra Almendras, PharmD | PGY2 Medication-Use Safety and Policy Resident<br><i>UMass Memorial Medical Center</i>                 |
| Brittany Block, PharmD      | PGY2 Critical Care Pharmacy Resident<br><i>UMass Memorial Medical Center</i>                           |
| Tessa Brighton, PharmD      | PGY2 Critical Care Pharmacy Resident<br><i>UMass Memorial Medical Center</i>                           |
| Je Hee (Jess) Jeon, PharmD  | Clinical Pharmacist<br><i>Beth Israel Deaconess Medical Center</i>                                     |
| Christopher May, PharmD     | PGY2 Critical Care Pharmacy Resident<br><i>Abington - Jefferson Health</i>                             |
| Nicole Tokatli, PharmD      | Clinical Pharmacist<br><i>UMass Memorial Medical Center</i>  |
| <b>2020-2021</b>            |  |
| Bridget Cange, PharmD       | Clinical Pharmacist<br><i>Hartford Hospital</i>  |
| Racha Kabbani, PharmD       | PGY2 Critical Care Pharmacy Resident<br><i>University of Washington</i>                                |
| Kyle Mahoney, PharmD, MBA   | Clinical Pharmacist<br><i>Boston Medical Center</i>  |
| Allen McClearnen, PharmD    | Clinical Pharmacist<br><i>Maine General Hospital</i>   |
| Richard Rovelli, PharmD     | PGY2 Cardiology Pharmacy Resident<br><i>University of Maryland Medical Center</i>                      |
| Krysta Shannon, PharmD      | PGY2 Internal Medicine Pharmacy Resident<br><i>New York-Presbyterian Hospital</i>                      |
| <b>2019-2020</b>            |  |
| Sydney Graboyes, PharmD     | PGY2 Cardiology Pharmacy Resident<br><i>University of North Carolina</i>                               |
| Victoria Grant, PharmD      | Infectious Disease Fellow (2 Year Program)<br><i>Loma Linda University</i>                             |
| Carmen Gust, PharmD         | PGY2 Health-System Pharmacy Administration and Leadership Resident<br><i>Indiana University Health</i> |
| Ann-Marie Idusuyi, PharmD   | PGY2 Infectious Disease Pharmacy Resident<br><i>Beth Israel Deaconess Medical Center</i>               |
| Emily Porter, PharmD        | PGY2 Emergency Medicine Pharmacy Resident<br><i>UMass Memorial Medical Center</i>                      |
| Wenyi Zhu, PharmD           | PGY2 Critical Care Pharmacy Resident<br><i>Advocate Lutheran General Hospital</i>                      |
| <b>2018-2019</b>            |  |
| Andy Chen, PharmD           | PGY2 Oncology Pharmacy Resident<br><i>University of Washington</i>                                     |
| Annaliese Clancy, PharmD    | PGY2 Cardiology Pharmacy Resident  |

|                             |   |
|-----------------------------|---|
|                             | <i>UMass Memorial Medical Center</i>  |
| David Fussell-Louie, PharmD | Clinical Pharmacist<br><i>Rhode Island Hospital</i>                           |
| Michell Gunther, PharmD     | PGY2 Critical Care Pharmacy Resident<br><i>New York-Presbyterian Hospital</i> |
| Nicole Hlavacek, PharmD     | PGY2 Emergency Medicine Pharmacy Resident<br><i>Mayo Clinic</i>               |
| Kayleigh Mitchell, PharmD   | PGY2 Emergency Medicine Pharmacy Resident<br><i>Banner Health</i>             |
| <b>...And many more!</b>    |   |





# SAY HELLO TO WORCESTER

Welcome to the state's most vibrant and livable mid-sized city! Worcester is the second largest and fastest-growing major city in New England and features a large variety of beautiful scenery, historical sites, and fun indoor and outdoor activities for everyone!

Beyond our mentor program and benefits package, including conference reimbursement and the Employee Assistance Program, we aim to build a well-rounded residency program focusing on developing each resident professionally and personally.



### Resident Bonding Events

- Making the most of what Worcester and Central MA has to offer!
- Several 'Thank-A-Resident' Days each year, dedicated to resident bonding and wellness with clinical services covered by preceptors

Mentor-Mentee  
Meet & Greet socials!

**WooSox**



Renowned  
breweries &  
restaurants galore!



Hiking,  
skiing, &  
more!



**TREE HOUSE  
BREWING CO.**